

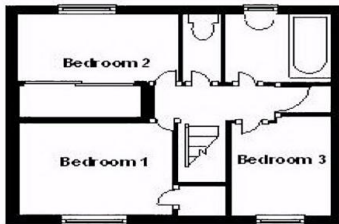
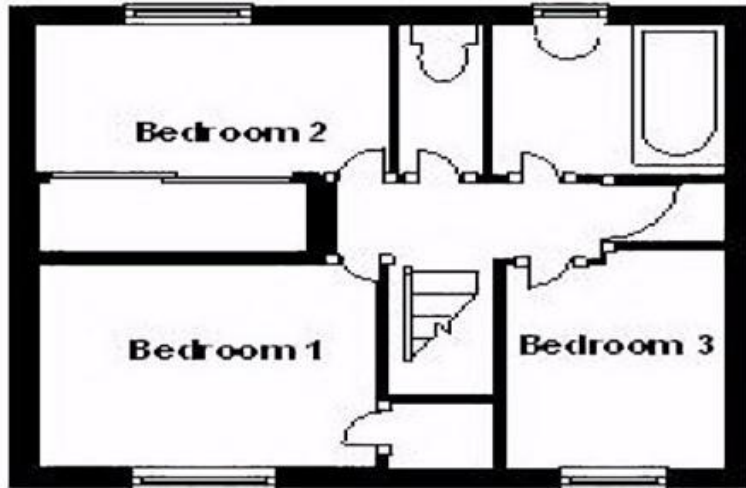


**Caythorpe Square,  
Corby  
NN18 0HJ**



**THIS PROPERTY  
HAS BEEN LET WITH RIGHT 1**

**CALL US TO ENQUIRE  
ON SIMILAR PROPERTIES!**



[This Property Has been Let by Right 1. Call us on to enquire on similar properties]

Right 1 brings to the market this spacious family home, situated in the popular Beanfield area. The property comprises of entrance hall, large kitchen, store room, lounge with feature flooring. Upstairs has three good sized bedrooms with storage space. The property also boasts a bathroom and separate w.c. Outside you have front and enclosed rear garden. This property screams with potential and viewings are highly recommended.

- THREE BEDROOMS
- LARGE LOUNGE
- KITCHEN
- POPULAR AREA
- FRONT AND REAR GARDENS
- FAMILY BATHROOM
- SEPERATE W.C
- CALL TO VIEW

In recent years, Corby has seen a substantial growth across all sectors, with the introduction of such landmarks as the Corby Train Station, Corby Cube; International Swimming Pool and Savoy Cinema being just a few of the many new developments the town has taken on. However, while the town may be going through the process of modernisation across so many sectors, there remains a healthy amount of attractions that have been around long enough to be seen as part of the towns rich history, such as The Boating Lake; a central hub for leisurely strolls or fishing trips, or the Historic Rockingham Castle. The town is also home to a wide range of schools, like the prestigious Brooke Weston, or Lodge Park, an iconic school that houses some of the best sports facilities the town has to offer. This and the strong transport links to the neighbouring towns of Kettering, Wellingborough and Oakham make Corby a fantastic place to live for people of all walks of life.

**Price: £650**

