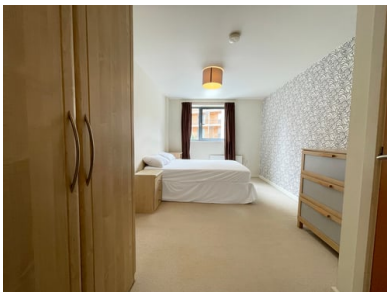




Velocity West, City Walk Leeds LS11 9BG



-SOLD STC - MORE PROPERTIES URGENTLY REQUIRED FOR WAITING BUYERS.

****IDEAL FOR CITY CENTRE LIVING!!****

Ideal for a First Time Purchase or a Buy To Let. This Two Bedroomed Spacious Luxury Apartment in the Heart of Leeds City Centre. Allocated Parking. No Chain. Two Bathrooms.

THE DEVELOPMENT: Velocity is a very popular development with owner-occupiers and tenants alike. It takes the form of four individual blocks all with allocated parking. Being positioned south of the city, it offers both easy access into and out of the City Centre, with the main motorways (M621, M1, M62) being just around the corner. Being part of the up and coming South Bank project - this location is one to watch in the future.

- Ultra fast broadband available.
- Easy Access to Leeds City Centre & central train station.
- Easy Access to Crown Point Center.
- Located within the recently completed Holbeck Urban Village Leeds regeneration area.

Right 1 Estate Agents are pleased to offer to the market this truly stunning and immaculately presented 2-Bedroom apartment located in Velocity West, Covering over approximately 740sq.ft, the apartment offers allocated parking and City views. This first floor property presents 2 bedrooms with the master benefiting from built-in wardrobes and access to an en-suite, the master contemporary bathroom is neutrally part tiled and has an over bath shower, toilet, heated towel rail and sink. You are then greeted by a light and spacious open plan living and dining area with large panoramic windows offering city views towards the south/west, which then leads onto an open plan modern

kitchen which offers a dishwasher, built in oven hob with extractor fan over and fridge/freezer box. There is also a good size storage room and boiler cupboard. This property has been tastefully decorated throughout making it a very attractive and sought-after apartment.

The development also offers well-kept communal gardens and secure underground allocated parking. This excellent location is walking distance to the main retail areas of Leeds City Centre and transport links for commuters looking to travel further afield.

The Vendor informs us that the following charges apply:-

Ground Rent - £200 p.a. / Service Charge - £1,263.70 p.a.

Lease - 982 years remaining

NB. In accordance with Section 21 of the Estate Agent Act 1979, we declare that there is a personal interest in the sale of this property. The property is being sold by a member of staff within Right 1.

Price: £195,000

Right1 Property Agents

01536 443377